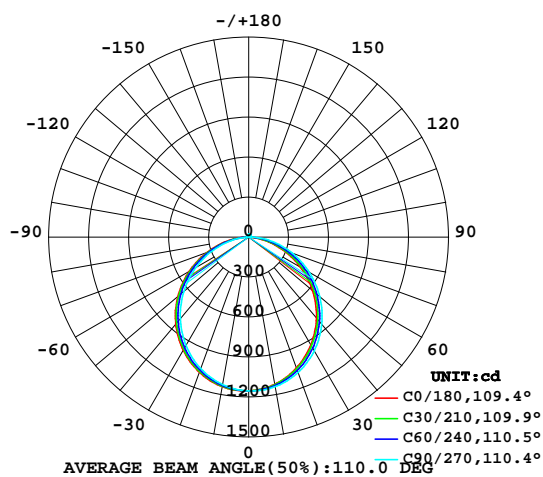


LUMINAIRE PHOTOMETRIC TEST REPORT

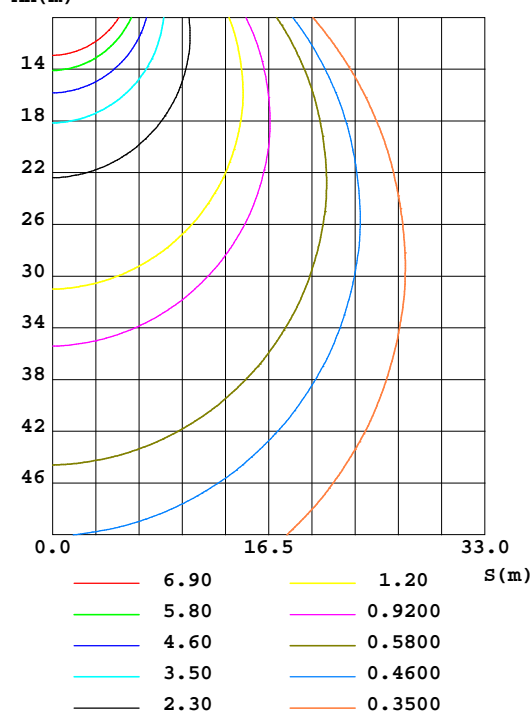
Test:U:119.3V I:0.2170A P:25.70W PF:0.9930 Lamp Flux:3291.18x1 lm					
NAME: 二代线条灯			TYPE:下发光 白色外壳		WEIGHT:
DIM.: 2FT			SPEC.:4000K		SERIAL No.:YQ2107-7
MFR.: YQ			SUR.:0.171*1.13m		PROTECTION ANGLE:

DATA OF LAMP			PHOTOMETRIC DATA Eff: 128.06 lm/W		
MODEL		I _{max} (cd)	1157	S/MH(C0/180)	1.21
NOMINAL POWER(W)	26	LOR(%)	100.0	S/MH(C90/270)	1.27
RATED VOLTAGE(V)	120	TOTAL FLUX(lm)	3291.2	η UP,DN(C0-180)	1.0,50.3
NOMINAL FLUX(lm)	3291.18	CIE CLASS	DIRECT	η UP,DN(C180-360)	1.0,47.6
LAMPS INSIDE	1	η up(%)	2.1	CIBSE SHR NOM	1.25
TEST VOLTAGE(V)	119.2	η down(%)	97.9	CIBSE SHR MAX	1.35

LUMINOUS INTENSITY DISTRIBUTION DIAGRAM



C0 PLANE ISOLUX DIAGRAM (UNIT:lx)



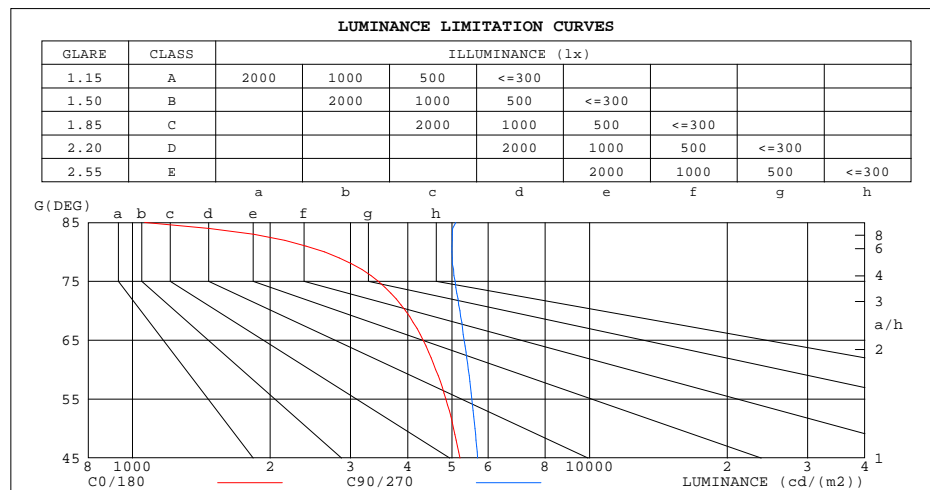
C Range: 0 - 360DEG
C Interval: 30.0DEG
Test Speed: HIGH
Temperature:26.3DEG
Operators:Ethan
Test Date:2021-08-16

γ Range: 0 - 180DEG
γ Interval: 1.0DEG
Test System:EVERFINE GO-2000B_V1 SYSTEM V2.0.268
Humidity:36%
Test Distance:6.770m [K=1.0000]
Remarks: 聚鑫德源 AI40D2C-421000
源磊A+ 13S5P/13S10P
E款 0:10

ZONAL FLUX DIAGRAM AND LUMINANCE LIMITATION CURVES

ZONAL FLUX DIAGRAM:

γ	C0	C45	C90	C135	C180	C225	C270	C315	γ	Φ zone	Φ total	Φ lum, lamp
10	1122	1128	1140	1147	1140	1134	1124	1115	0- 10	109.1	109.1	3.31,3.31
20	1045	1059	1082	1095	1081	1069	1052	1035	10- 20	311.2	420.3	12.8,12.8
30	935.0	953.6	985.1	1003	981.3	967.6	940.7	919.4	20- 30	468.6	888.8	27.27
40	794.3	817.3	853.1	876.9	852.6	833.6	798.7	775.4	30- 40	560.5	1449	44.44
50	625.8	656.6	697.2	725.3	693.7	675.2	636.0	608.4	40- 50	576.7	2026	61.6,61.6
60	445.3	479.2	524.3	550.9	515.7	498.3	458.5	427.5	50- 60	516.6	2543	77.3,77.3
70	261.4	294.9	343.8	367.0	329.8	312.2	277.4	243.0	60- 70	391.9	2934	89.2,89.2
80	88.32	119.2	167.6	182.9	149.9	134.6	107.5	74.63	70- 80	226.1	3161	96.96
90	2.497	3.651	15.67	28.52	7.588	5.195	2.508	2.836	80- 90	62.71	3223	97.9,97.9
100	5.076	4.881	4.373	3.816	3.706	4.216	5.091	5.320	90-100	4.532	3228	98.1,98.1
110	8.217	7.930	7.619	6.651	6.430	6.981	8.303	8.312	100-110	6.341	3234	98.3,98.3
120	11.37	11.03	11.08	9.728	9.391	9.843	11.50	11.23	110-120	8.988	3243	98.5,98.5
130	13.98	13.64	14.07	12.46	12.02	12.40	14.20	13.73	120-130	10.69	3254	98.9,98.9
140	15.94	15.84	16.43	14.78	14.14	14.51	16.28	15.78	130-140	11.08	3265	99.2,99.2
150	17.38	17.74	18.16	16.75	15.92	16.39	17.95	17.61	140-150	10.22	3275	99.5,99.5
160	18.96	19.52	19.62	18.51	18.10	18.33	19.66	19.48	150-160	8.342	3284	99.8,99.8
170	21.00	21.04	21.08	20.36	20.75	20.30	21.21	21.04	160-170	5.615	3289	99.9,99.9
180	22.81	21.93	22.31	21.96	22.81	21.92	22.33	21.94	170-180	2.038	3291	100,100
DEG	LUMINOUS INTENSITY:cd									UNIT:lm		



LUMINANCE cd/(m²)		
G(°)	C0/180	C90/270
85	1063	5098
80	2632	4997
75	3453	5083
70	3955	5202
65	4328	5319
60	4609	5427
55	4847	5526
50	5038	5614
45	5206	5693

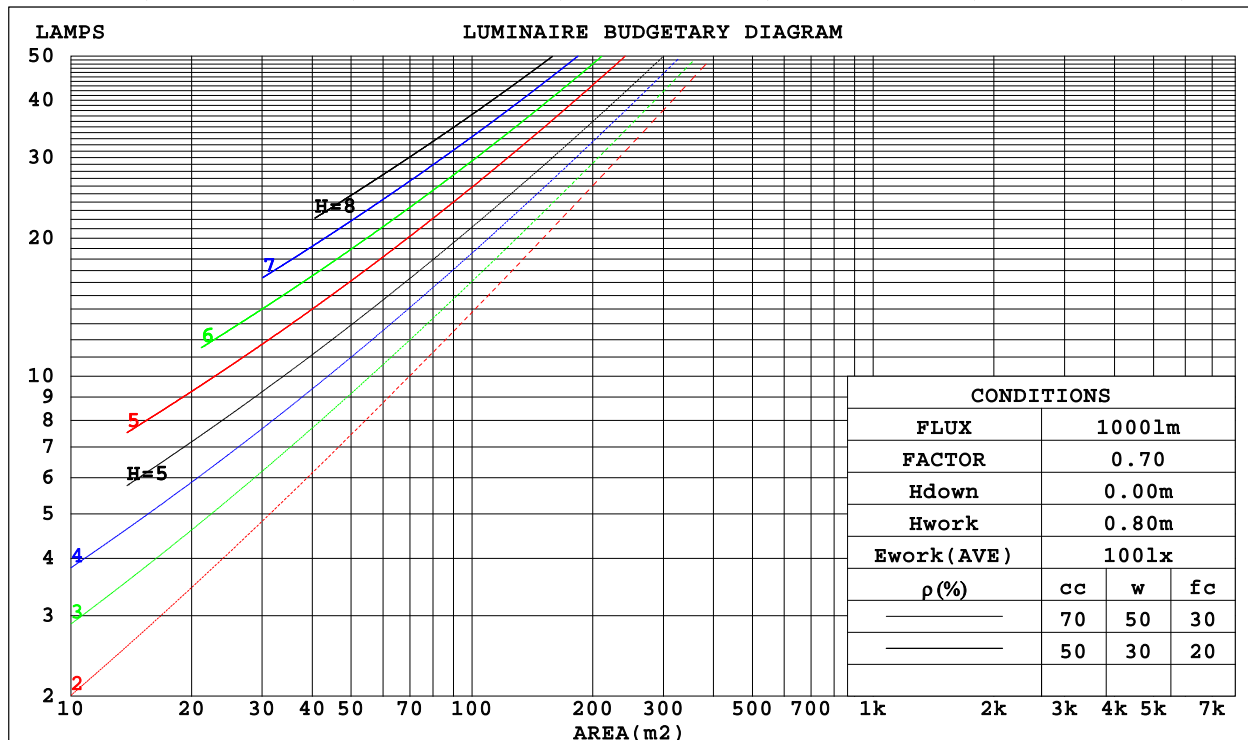
C Range: 0 - 360DEG
 C Interval: 30.0DEG
 Test Speed: HIGH
 Temperature: 26.3DEG
 Operators: Ethan
 Test Date: 2021-08-16

γ Range: 0 - 180DEG
 γ Interval: 1.0DEG
 Test System: EVERFINE GO-2000B_V1 SYSTEM V2.0.268
 Humidity: 36%
 Test Distance: 6.770m [K=1.0000]
 Remarks: 聚鑫德源 AI40D2C-421000
 源磊A+ 13S5P/13S10P
 E款 0:10

CU AND LUMINAIRE BUDGETARY ESTIMATE DIAGRAM

Test:U:119.3V I:0.2170A P:25.70W PF:0.9930 Lamp Flux:3291.18x1 lm		
NAME: 二代线条灯	TYPE:下发光 白色外壳	WEIGHT:
DIM.: 2FT	SPEC.:4000K	SERIAL No.:YQ2107-7
MFR.: YQ	SUR.:0.171*1.13m	PROTECTION ANGLE:

ρ_{cc}	80%			70%			50%			30%			10%			0	
ρ_w	50%	30%	10%	50%	30%	10%	50%	30%	10%	50%	30%	10%	50%	30%	10%	0	
ρ_{fc}	20%			20%			20%			20%			20%			0	
RCR	RCR:Room Cavity Ratio						Coefficients of Utilization(CU)										
0.0	1.19	1.19	1.19	1.16	1.16	1.16	1.10	1.10	1.10	1.05	1.05	1.05	1.00	1.00	1.00	.98	
1.0	1.03	.99	.95	1.01	.97	.94	.96	.93	.90	.92	.89	.87	.88	.86	.84	.82	
2.0	.90	.83	.78	.88	.82	.76	.84	.79	.74	.81	.76	.72	.77	.74	.70	.68	
3.0	.79	.71	.64	.77	.70	.64	.74	.68	.62	.71	.66	.61	.68	.64	.60	.57	
4.0	.70	.61	.55	.69	.60	.54	.66	.59	.53	.63	.57	.52	.61	.56	.51	.49	
5.0	.63	.54	.47	.61	.53	.47	.59	.52	.46	.57	.50	.45	.55	.49	.45	.42	
6.0	.56	.47	.41	.55	.47	.41	.53	.46	.40	.51	.45	.40	.50	.44	.39	.37	
7.0	.51	.42	.36	.50	.42	.36	.48	.41	.36	.47	.40	.35	.45	.39	.35	.33	
8.0	.47	.38	.32	.46	.38	.32	.44	.37	.32	.43	.36	.31	.42	.36	.31	.29	
9.0	.43	.35	.29	.42	.34	.29	.41	.34	.29	.40	.33	.28	.38	.32	.28	.26	
10.0	.39	.32	.26	.39	.31	.26	.38	.31	.26	.37	.30	.26	.36	.30	.26	.24	



C Range: 0 - 360DEG
 C Interval: 30.0DEG
 Test Speed: HIGH
 Temperature: 26.3DEG
 Operators: Ethan
 Test Date: 2021-08-16

γ Range: 0 - 180DEG
 γ Interval: 1.0DEG
 Test System: EVERFINE GO-2000B_V1 SYSTEM V2.0.268
 Humidity: 36%
 Test Distance: 6.770m [K=1.0000]
 Remarks: 聚鑫德源 AI40D2C-421000
 源磊A+ 13S5P/13S10P
 E款 0:10

WEC AND CCEC

Test:U:119.3V I:0.2170A P:25.70W PF:0.9930 Lamp Flux:3291.18x1 lm		
NAME: 二代线条灯	TYPE:下发光 白色外壳	WEIGHT:
DIM.: 2FT	SPEC.:4000K	SERIAL No.:YQ2107-7
MFR.: YQ	SUR.:0.171*1.13m	PROTECTION ANGLE:

pcc	80%			70%			50%			30%			10%			0
pw	50%	30%	10%	50%	30%	10%	50%	30%	10%	50%	30%	10%	50%	30%	10%	0
pfc	20%			20%			20%			20%			20%			0
RCR	RCR:Room Cavity Ratio						Wall Exitance Coefficients(WEC)									
0.0																
1.0	.309	.175	.056	.301	.172	.055	.286	.164	.052	.273	.158	.051	.261	.151	.049	
2.0	.290	.159	.049	.283	.156	.048	.271	.150	.047	.259	.145	.045	.248	.140	.044	
3.0	.268	.143	.043	.262	.141	.042	.251	.136	.041	.241	.132	.040	.231	.128	.040	
4.0	.248	.129	.038	.242	.127	.037	.232	.123	.037	.223	.120	.036	.214	.116	.035	
5.0	.229	.117	.034	.224	.115	.034	.215	.112	.033	.207	.109	.032	.199	.106	.032	
6.0	.212	.106	.030	.208	.105	.030	.200	.103	.030	.193	.100	.029	.185	.098	.029	
7.0	.198	.098	.028	.194	.097	.028	.187	.094	.027	.180	.092	.027	.174	.090	.026	
8.0	.185	.090	.025	.181	.089	.025	.175	.087	.025	.169	.085	.025	.163	.084	.024	
9.0	.173	.084	.023	.170	.083	.023	.164	.081	.023	.159	.079	.023	.153	.078	.023	
10.0	.163	.078	.022	.160	.077	.022	.155	.076	.021	.150	.074	.021	.145	.073	.021	

pcc	80%			70%			50%			30%			10%			0	
pw	50%	30%	10%	50%	30%	10%	50%	30%	10%	50%	30%	10%	50%	30%	10%	0	
pfc	20%			20%			20%			20%			20%			0	
RCR	RCR:Room Cavity Ratio						Ceiling Cavity Exitance Coefficients(CCEC)										
0.0	.206	.206	.206	.176	.176	.176	.120	.120	.120	.069	.069	.069	.022	.022	.022		
1.0	.196	.172	.150	.168	.148	.129	.115	.102	.089	.066	.059	.052	.021	.019	.017		
2.0	.188	.148	.114	.161	.127	.099	.110	.088	.069	.064	.051	.040	.020	.017	.013		
3.0	.180	.130	.091	.154	.112	.079	.106	.078	.055	.061	.046	.032	.020	.015	.011		
4.0	.173	.117	.075	.148	.101	.065	.102	.070	.046	.059	.041	.027	.019	.013	.009		
5.0	.165	.107	.064	.142	.092	.055	.098	.064	.039	.057	.038	.023	.018	.012	.008		
6.0	.158	.098	.056	.136	.085	.048	.094	.060	.034	.054	.035	.020	.018	.011	.007		
7.0	.151	.091	.050	.130	.079	.043	.090	.056	.031	.052	.033	.018	.017	.011	.006		
8.0	.145	.086	.045	.125	.074	.039	.086	.052	.028	.050	.031	.017	.016	.010	.006		
9.0	.139	.081	.042	.120	.070	.036	.083	.049	.026	.048	.029	.015	.016	.010	.005		
10.0	.133	.077	.039	.115	.066	.034	.080	.047	.024	.046	.028	.014	.015	.009	.005		

C Range: 0 - 360DEG
 C Interval: 30.0DEG
 Test Speed: HIGH
 Temperature:26.3DEG
 Operators:Ethan
 Test Date:2021-08-16

γ Range: 0 - 180DEG
 γ Interval: 1.0DEG
 Test System:EVERFINE GO-2000B_V1 SYSTEM V2.0.268
 Humidity:36%
 Test Distance:6.770m [K=1.0000]
 Remarks: 聚鑫德源 AI40D2C-421000
 源磊A+ 13S5P/13S10P
 E款 0:10

Uncorrected UGR Table

Test:U:119.3V I:0.2170A P:25.70W PF:0.9930 Lamp Flux:3291.18x1 lm											
NAME: 二代线条灯					TYPE:下发光 白色外壳			WEIGHT:			
DIM.: 2FT					SPEC.:4000K			SERIAL No.:YQ2107-7			
MFR.: YQ					SUR.:0.171*1.13m			PROTECTION ANGLE:			
ceiling/cavity	0.7	0.7	0.5	0.5	0.3	0.7	0.7	0.5	0.5	0.3	
walls	0.5	0.3	0.5	0.3	0.3	0.5	0.3	0.5	0.3	0.3	
working plane	0.2	0.2	0.2	0.2	0.2	0.2	0.2	0.2	0.2	0.2	
Room dimensions	Viewed crosswise					Viewed endwise					
x = 2H y = 2H	18.1	19.6	18.4	19.8	20.1	18.7	20.2	19.0	20.4	20.7	
	3H	19.4	20.8	19.8	21.1	21.4	20.3	21.7	20.6	22.0	22.2
	4H	19.9	21.2	20.3	21.5	21.8	21.0	22.3	21.4	22.6	22.9
	6H	20.2	21.4	20.6	21.7	22.1	21.6	22.8	22.0	23.1	23.5
	8H	20.2	21.4	20.6	21.7	22.1	21.8	23.0	22.2	23.3	23.7
	12H	20.2	21.4	20.6	21.7	22.0	22.0	23.1	22.4	23.5	23.8
4H	2H	18.7	20.1	19.1	20.3	20.6	19.2	20.5	19.5	20.8	21.1
	3H	20.3	21.4	20.6	21.7	22.1	21.0	22.2	21.4	22.5	22.8
	4H	20.9	21.9	21.3	22.3	22.6	21.8	22.9	22.2	23.2	23.6
	6H	21.2	22.2	21.7	22.6	23.0	22.5	23.5	23.0	23.9	24.3
	8H	21.3	22.2	21.8	22.6	23.0	22.8	23.7	23.3	24.1	24.5
	12H	21.3	22.1	21.8	22.5	23.0	23.1	23.8	23.5	24.3	24.7
8H	4H	21.2	22.0	21.6	22.4	22.9	22.0	22.9	22.5	23.3	23.7
	6H	21.7	22.4	22.1	22.8	23.3	22.9	23.6	23.4	24.0	24.5
	8H	21.8	22.4	22.3	22.9	23.4	23.3	23.9	23.7	24.3	24.8
	12H	21.8	22.4	22.3	22.9	23.4	23.6	24.1	24.1	24.6	25.1
12H	4H	21.2	22.0	21.6	22.4	22.8	22.0	22.8	22.5	23.2	23.7
	6H	21.7	22.4	22.2	22.8	23.3	22.9	23.5	23.4	24.0	24.5
	8H	21.9	22.4	22.4	22.9	23.4	23.3	23.9	23.8	24.3	24.9
Variations with the observer position at spacings:											
S = 1.0H	+ 0.2 / - 0.2					+ 0.1 / - 0.2					
1.5H	+ 0.2 / - 0.4					+ 0.2 / - 0.3					
2.0H	+ 0.2 / - 0.4					+ 0.2 / - 0.3					

CIE Pub.117 Corrected 3291 lm Total Lamp Luminous Flux.(8log(F/F0) = 4.1)

C Range: 0 - 360DEG
 C Interval: 30.0DEG
 Test Speed: HIGH
 Temperature:26.3DEG
 Operators:Ethan
 Test Date:2021-08-16

γ Range: 0 - 180DEG
 γ Interval: 1.0DEG
 Test System:EVERFINE GO-2000B_V1 SYSTEM V2.0.268
 Humidity:36%
 Test Distance:6.770m [K=1.0000]
 Remarks: 聚鑫德源 AI40D2C-421000
 源磊A+ 13S5P/13S10P
 E款 0:10

UTILIZATION FACTORS TABLE

Test:U:119.3V I:0.2170A P:25.70W PF:0.9930 Lamp Flux:3291.18x1 lm		
NAME: 二代线条灯	TYPE:下发光 白色外壳	WEIGHT:
DIM.: 2FT	SPEC.:4000K	SERIAL No.:YQ2107-7
MFR.: YQ	SUR.:0.171*1.13m	PROTECTION ANGLE:

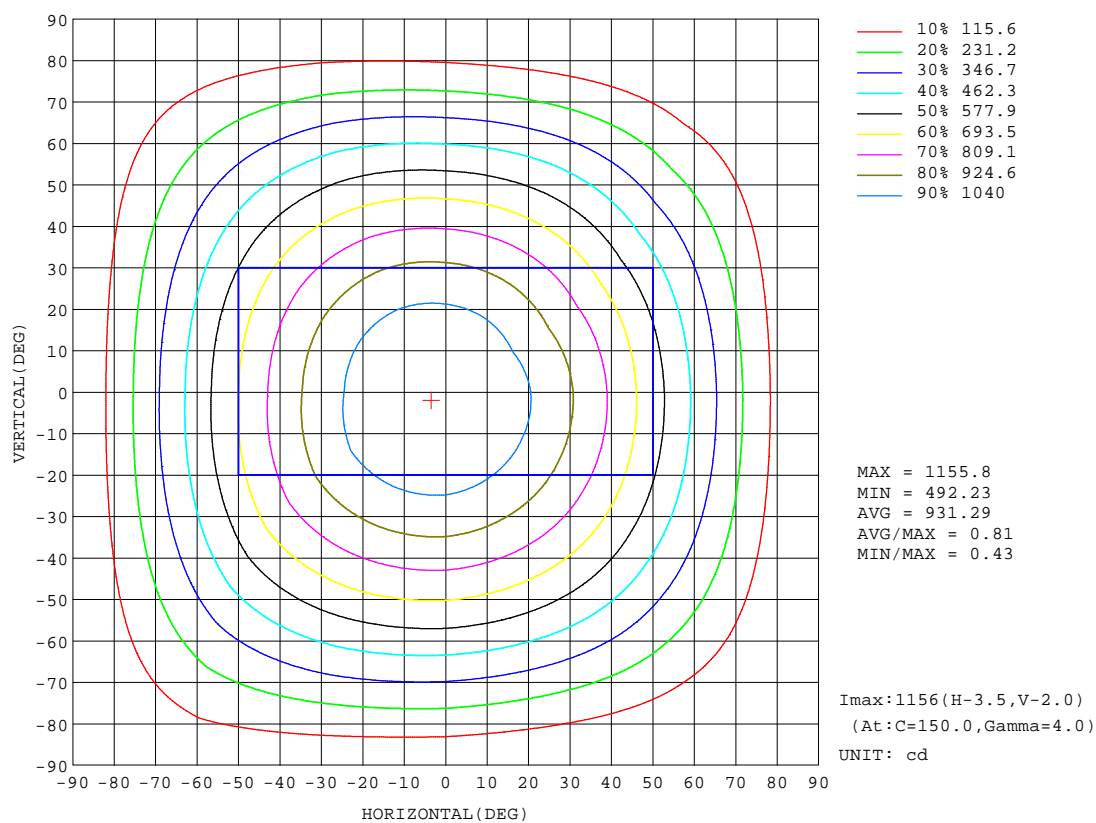
REFLECTANCE										
Ceiling	0.8	0.8	0.8	0.7	0.7	0.7	0.5	0.5	0.5	0
Walls	0.7	0.5	0.3	0.7	0.5	0.3	0.7	0.5	0.3	0
Working plane	0.2	0.2	0.2	0.2	0.2	0.2	0.2	0.2	0.2	0
ROOM INDEX	UTILIZATION FACTORS(PERCENT) $k(RI) \times RCR = 5$									
k = 0.60	57	46	39	56	45	39	55	45	38	32
0.80	67	56	48	66	55	48	64	54	48	40
1.00	76	64	57	74	64	57	72	65	56	49
1.25	83	72	65	81	71	64	78	70	63	56
1.50	88	78	71	86	77	70	82	75	69	61
2.00	94	86	79	92	84	78	89	82	77	68
2.50	98	91	84	96	89	83	92	86	81	73
3.00	102	95	89	99	93	88	95	90	86	77
4.00	106	100	95	103	98	94	99	94	91	81
5.00	108	103	99	105	101	97	101	97	94	84
ROOM INDEX	UF(total)									Direct
According to DIN EN 13032-2 2004			Suspended					SHRNOM = 1.25		

C Range: 0 - 360DEG
 C Interval: 30.0DEG
 Test Speed: HIGH
 Temperature:26.3DEG
 Operators:Ethan
 Test Date:2021-08-16

γ Range: 0 - 180DEG
 γ Interval: 1.0DEG
 Test System:EVERFINE GO-2000B_V1 SYSTEM V2.0.268
 Humidity:36%
 Test Distance:6.770m [K=1.0000]
 Remarks: 聚鑫德源 AI40D2C-421000
 源磊A+ 13S5P/13S10P
 E款 0:10

ISOCANDELA DIAGRAM

Test:U:119.3V I:0.2170A P:25.70W PF:0.9930 Lamp Flux:3291.18x1 lm		
NAME: 二代线条灯	TYPE:下发光 白色外壳	WEIGHT:
DIM.: 2FT	SPEC.:4000K	SERIAL No.:YQ2107-7
MFR.: YQ	SUR.:0.171*1.13m	PROTECTION ANGLE:



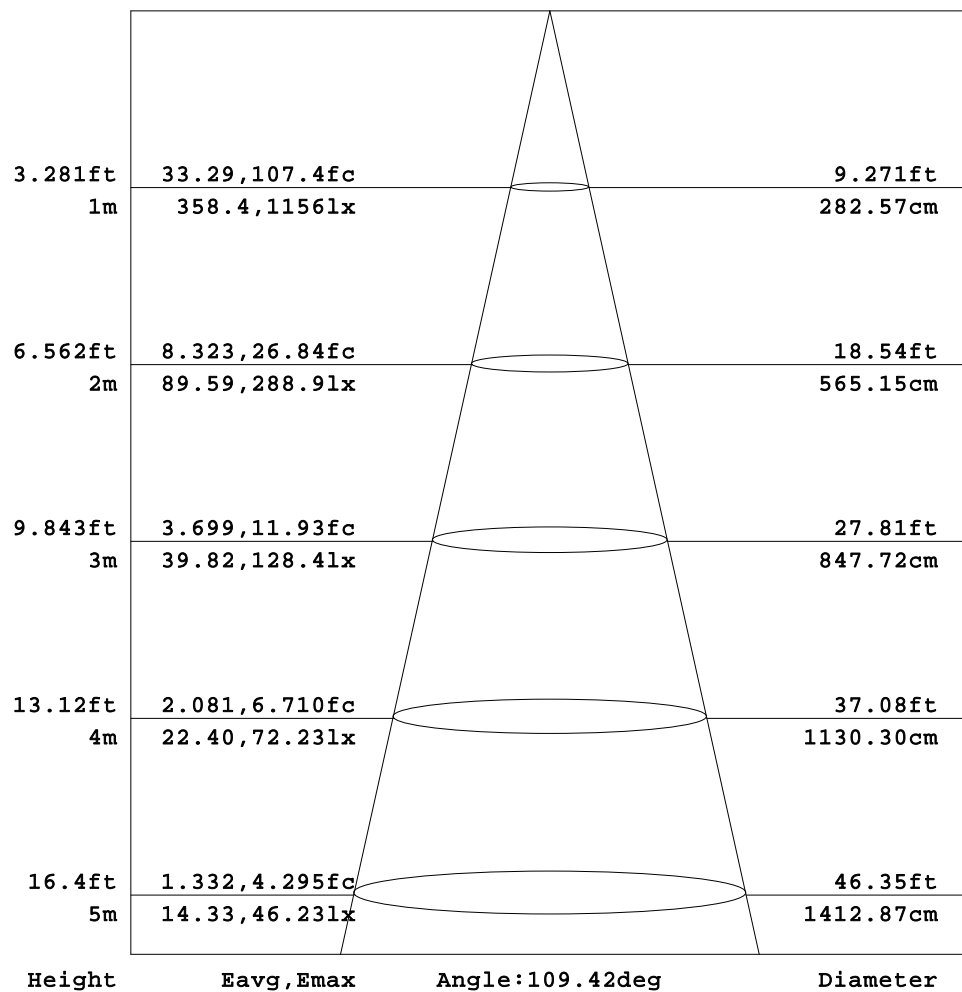
C Range: 0 - 360DEG
C Interval: 30.0DEG
Test Speed: HIGH
Temperature:26.3DEG
Operators:Ethan
Test Date:2021-08-16

γ Range: 0 - 180DEG
 γ Interval: 1.0DEG
Test System:EVERFINE GO-2000B_V1 SYSTEM V2.0.268
Humidity:36%
Test Distance:6.770m [K=1.0000]
Remarks: 聚鑫德源 AI40D2C-421000
源磊A+ 13S5P/13S10P
E款 0:10

AAI Figure

Test:U:119.3V I:0.2170A P:25.70W PF:0.9930 Lamp Flux:3291.18x1 lm		
NAME: 二代线条灯	TYPE:下发光 白色外壳	WEIGHT:
DIM.: 2FT	SPEC.:4000K	SERIAL No.:YQ2107-7
MFR.: YQ	SUR.:0.171*1.13m	PROTECTION ANGLE:

Flux out:2296 lm



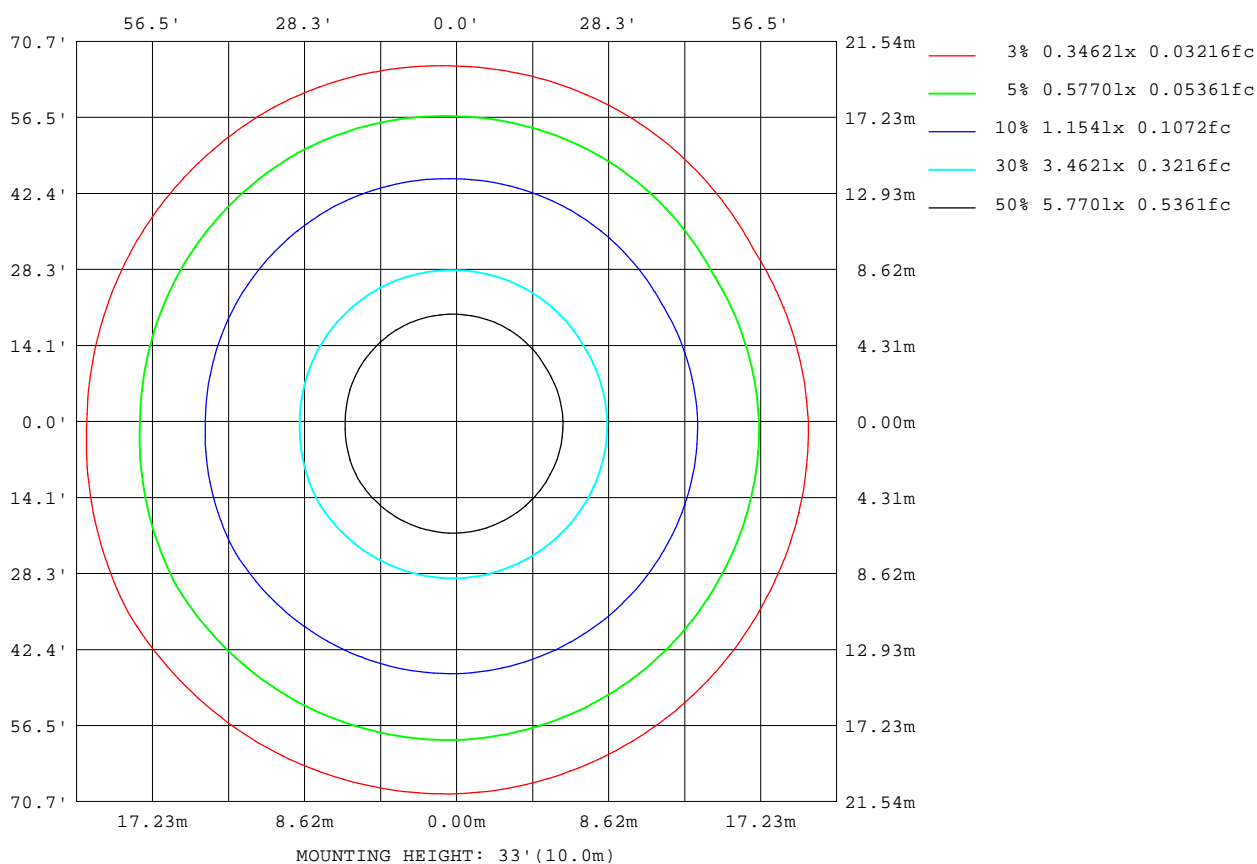
Note: The Curves indicate the illuminated area and the average illumination when the luminaire is at different distance.

C Range: 0 - 360DEG
C Interval: 30.0DEG
Test Speed: HIGH
Temperature: 26.3DEG
Operators: Ethan
Test Date: 2021-08-16

γ Range: 0 - 180DEG
γ Interval: 1.0DEG
Test System: EVERFINE GO-2000B_V1 SYSTEM V2.0.268
Humidity: 36%
Test Distance: 6.770m [K=1.0000]
Remarks: 聚鑫德源 AI40D2C-421000
源磊A+ 13S5P/13S10P
E款 0:10

ISOLUX DIAGRAM

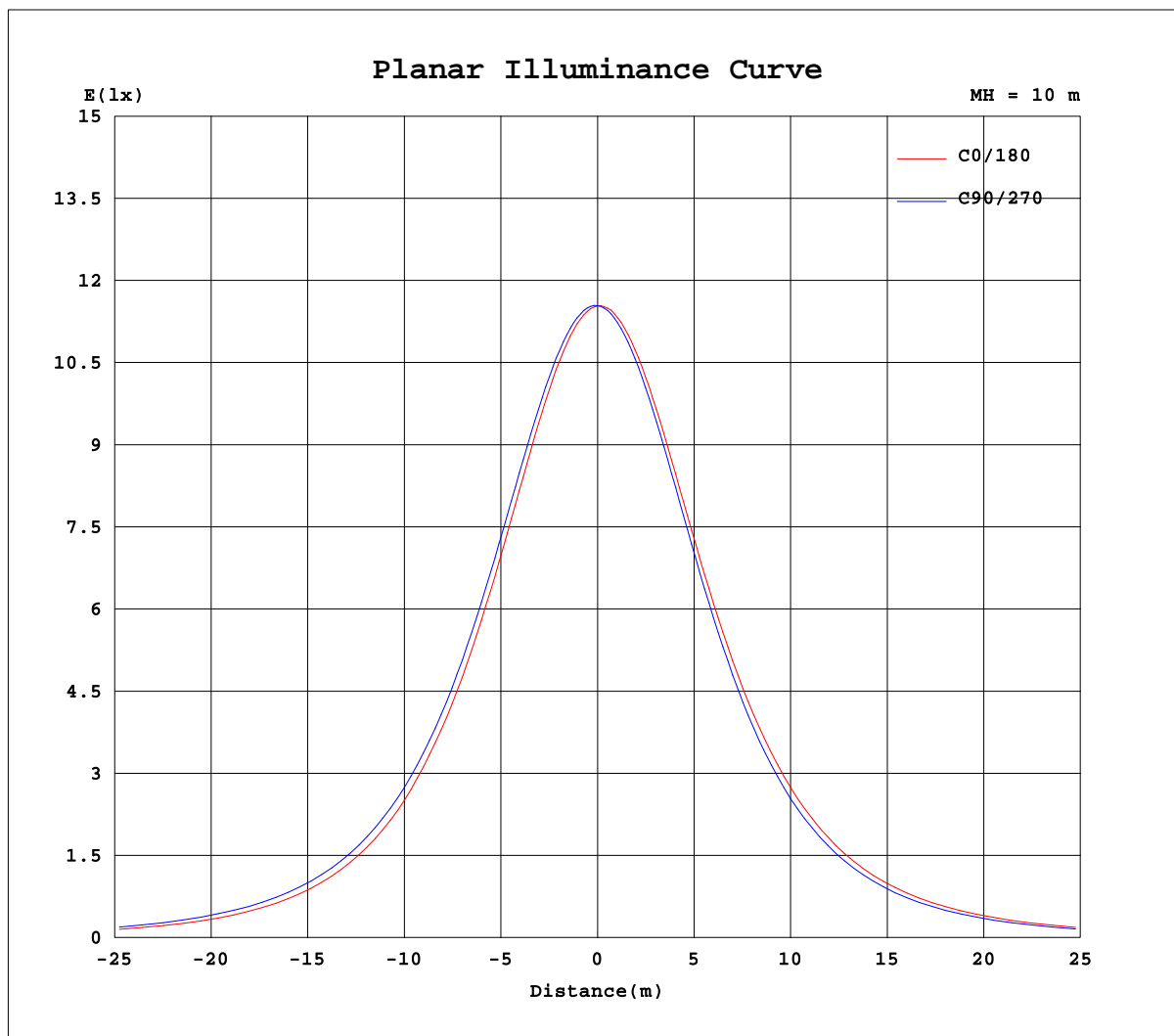
Test:U:119.3V I:0.2170A P:25.70W PF:0.9930 Lamp Flux:3291.18x1 lm		
NAME: 二代线条灯	TYPE:下发光 白色外壳	WEIGHT:
DIM.: 2FT	SPEC.:4000K	SERIAL No.:YQ2107-7
MFR.: YQ	SUR.:0.171*1.13m	PROTECTION ANGLE:



C Range: 0 - 360DEG
C Interval: 30.0DEG
Test Speed: HIGH
Temperature: 26.3DEG
Operators: Ethan
Test Date: 2021-08-16

γ Range: 0 - 180DEG
 γ Interval: 1.0DEG
Test System: EVERFINE GO-2000B_V1 SYSTEM V2.0.268
Humidity: 36%
Test Distance: 6.770m [K=1.0000]
Remarks: 聚鑫德源 AI40D2C-421000
源磊A+ 13S5P/13S10P
E款 0:10

Planar Illuminance Curve



C Range: 0 - 360DEG
C Interval: 30.0DEG
Test Speed: HIGH
Temperature: 26.3DEG
Operators: Ethan
Test Date: 2021-08-16

γ Range: 0 - 180DEG
 γ Interval: 1.0DEG
Test System: EVERFINE GO-2000B_V1 SYSTEM V2.0.268
Humidity: 36%
Test Distance: 6.770m [K=1.0000]
Remarks: 聚鑫德源 AI40D2C-421000
源磊A+ 13S5P/13S10P
E款 0:10

LUMINOUS DISTRIBUTION INTENSITY DATA

Test:U:119.3V I:0.2170A P:25.70W PF:0.9930 Lamp Flux:3291.18x1 lm		
NAME: 二代线条灯	TYPE:下发光 白色外壳	WEIGHT:
DIM.: 2FT	SPEC.:4000K	SERIAL No.:YQ2107-7
MFR.: YQ	SUR.:0.171*1.13m	PROTECTION ANGLE:

Table--1

UNIT: cd

C(DEG) γ (DEG)	0	30	60	90	120	150	180	210	240	270	300	330						
0	1154	1154	1154	1154	1154	1154	1154	1154	1154	1154	1154	1154						
5	1144	1145	1148	1153	1155	1157	1153	1151	1149	1145	1142	1139						
10	1122	1125	1131	1140	1145	1149	1140	1137	1131	1124	1118	1112						
15	1089	1093	1103	1116	1123	1130	1116	1110	1103	1092	1085	1076						
20	1045	1052	1065	1082	1091	1099	1081	1074	1065	1052	1041	1030						
25	994	1003	1018	1038	1049	1058	1036	1028	1017	1001	988	975						
30	935	944	963	985	998	1008	981	974	961	941	926	913						
35	866	879	897	923	937	949	920	911	896	873	857	844						
40	794	807	827	853	870	884	853	842	825	799	782	768						
45	711	730	749	778	794	812	778	767	747	719	702	686						
50	626	644	669	697	717	734	694	685	665	636	619	598						
55	537	556	584	612	630	648	606	597	579	549	530	507						
60	445	464	495	524	544	558	516	505	491	459	441	414						
65	353	372	403	434	454	465	423	413	398	368	348	322						
70	261	279	310	344	362	372	330	319	306	277	256	230						
75	173	190	220	254	269	279	238	227	215	189	168	143						
80	88.3	104	134	168	178	188	150	140	130	108	85.4	63.8						
85	17.9	29.4	57.5	85.8	96.3	103	66.3	59.0	52.1	31.8	18.8	6.70						
90	2.50	2.49	4.81	15.7	28.9	28.2	7.59	6.63	3.76	2.51	2.80	2.87						
95	3.69	3.64	3.48	3.03	2.87	2.51	2.55	2.80	3.24	3.68	3.93	4.04						
100	5.08	4.98	4.78	4.37	4.00	3.63	3.71	3.97	4.46	5.09	5.28	5.36						
105	6.59	6.46	6.24	5.94	5.36	4.95	5.01	5.27	5.82	6.65	6.73	6.83						
110	8.22	8.04	7.82	7.62	6.90	6.40	6.43	6.70	7.26	8.30	8.25	8.37						
115	9.83	9.64	9.40	9.38	8.44	7.95	7.93	8.19	8.72	9.96	9.76	9.87						
120	11.4	11.1	10.9	11.1	9.97	9.49	9.39	9.57	10.1	11.5	11.2	11.3						
125	12.7	12.5	12.3	12.6	11.4	10.9	10.8	10.9	11.4	12.9	12.5	12.6						
130	14.0	13.7	13.6	14.1	12.7	12.2	12.0	12.1	12.7	14.2	13.7	13.7						
135	15.0	14.8	14.8	15.3	13.9	13.4	13.1	13.2	13.8	15.3	14.9	14.8						
140	15.9	15.8	15.9	16.4	15.1	14.5	14.1	14.2	14.8	16.3	15.9	15.6						
145	16.7	16.7	17.0	17.4	16.1	15.5	15.0	15.1	15.8	17.1	16.9	16.6						
150	17.4	17.6	17.9	18.2	17.1	16.4	15.9	16.0	16.8	17.9	17.7	17.5						
155	18.1	18.5	18.7	18.9	18.0	17.2	16.9	16.9	17.8	18.8	18.5	18.5						
160	19.0	19.6	19.5	19.6	18.9	18.1	18.1	17.9	18.8	19.7	19.4	19.6						
165	20.0	20.5	20.3	20.3	19.9	19.0	19.4	18.9	19.6	20.4	20.2	20.4						
170	21.0	21.3	20.8	21.1	20.8	20.0	20.8	20.0	20.6	21.2	20.9	21.2						
175	22.1	21.8	21.4	21.8	21.5	21.0	22.1	21.2	21.4	21.9	21.6	21.7						
180	22.8	22.0	21.9	22.3	22.0	21.9	22.8	22.0	21.8	22.3	22.1	21.8						

C Range: 0 - 360DEG
C Interval: 30.0DEG
Test Speed: HIGH
Temperature:26.3DEG
Operators:Ethan
Test Date:2021-08-16

γ Range: 0 - 180DEG
γ Interval: 1.0DEG
Test System:EVERFINE GO-2000B_V1 SYSTEM V2.0.268
Humidity:36%
Test Distance:6.770m [K=1.0000]
Remarks: 聚鑫德源 AI40D2C-421000
源磊A+ 13S5P/13S10P
E款 0:10